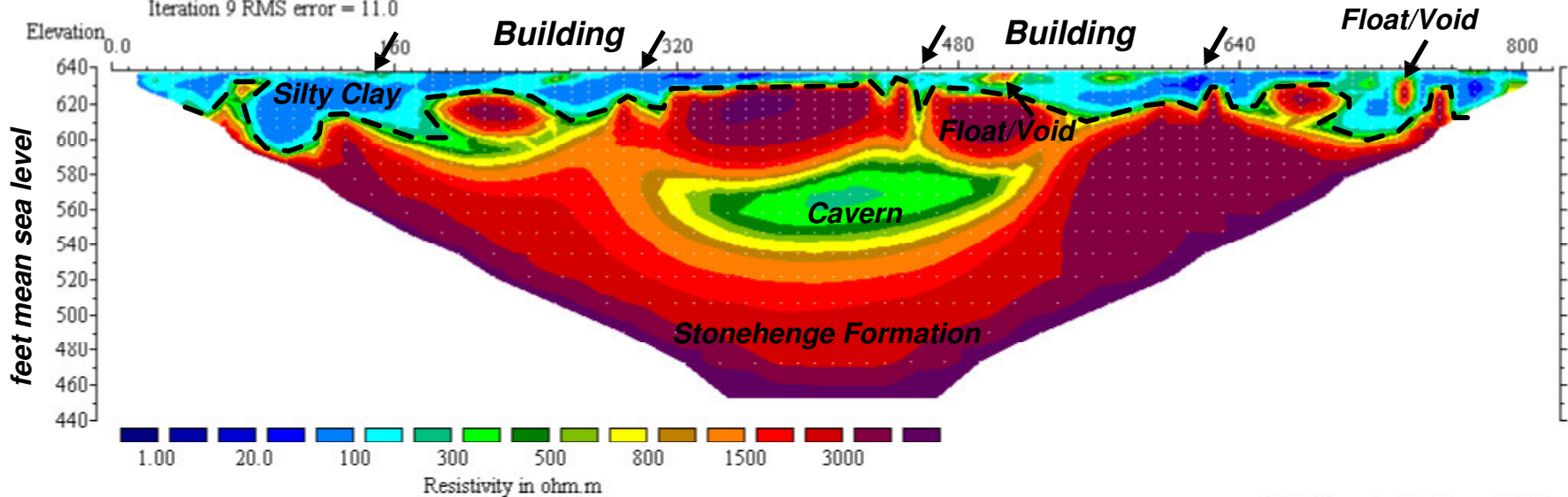


South

North

Sting/Swift prg: PCCA1

Model resistivity with topography
Iteration 9 RMS error = 11.0



Unit Electrode Spacing = 9.84 ft.

Horizontal scale is 11.36 pixels per unit spacing
Vertical exaggeration in model section display = 1.00
First electrode is located at 0.0 ft.
Last electrode is located at 816.9 ft.

Forrest Environmental Services, Inc.



Oak Hill, Virginia
(703) 648-9090
www.fesinc.net

DATE	February 2007	SCALE	feet
DRAWN BY		APPROVED BY	
JOB NO.	06208	DWG. NO./REV. NO.	PCCA.SRF

TITLE	ER Line A Proposed Clarke County High School Berryville, Virginia
CLIENT	PHR+A

FIGURE